

PRIMAERGEHAEUSE, DREHSCHIEBERDECKEL, WASSERPUMPE
 PRIMARY COVER, DISK VALVE COVERS, WATER PUMP
 CARTER FRIZIONE, COPERCHI VALVOLE, POMPA ACQUA

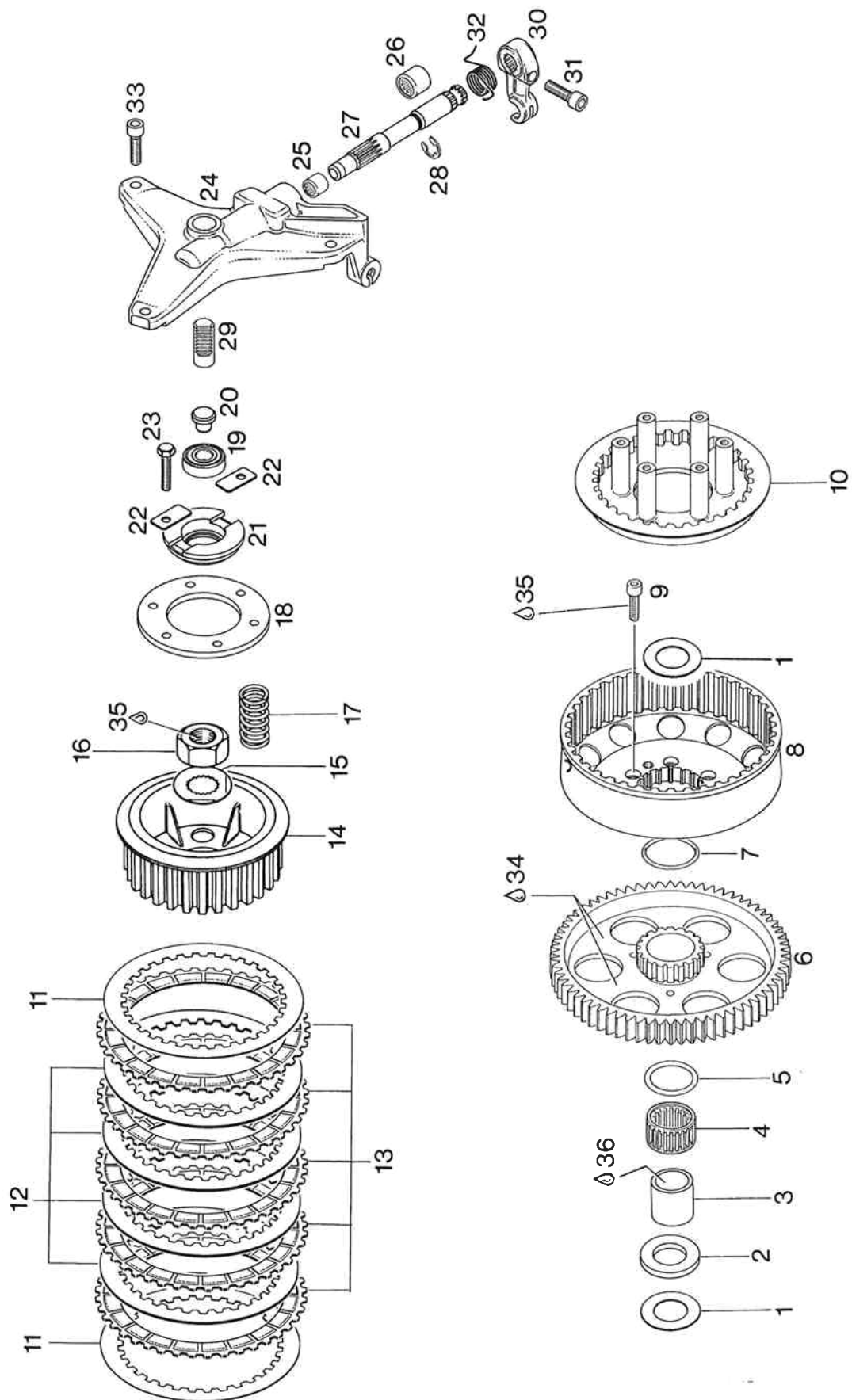
BILD-NR. ILL. NO. FIG.	TEILE-NR. PART NO. CODICE	B E Z E I C H N U N G D E S C R I P T I O N D E S C R I Z I O N E	STUECK QTY. QTA.
1 - 2 N	212 923	PRIMAERTRIEBGEHAEUSE KPL. PRIMARY DRIVE COVER ASSY., CARTER TRASMISSIONE PRIMARIA CPL.....	1
2	232 080	NADELLAGER NK 15/16A NEEDLE BEARING, 15/16 GABBIA A RULLI, 15/16.....	1
3	232 402	RK-LAGER 6001 BALL BEARING 6001, 12-28-8 CUSCINETTO 6001, 12-28-8.....	2
4	245 490	SICHERUNGSRING 28X1,2 DIN 472 RETAINING RING 28X1,2 / SEEGER 28X1,2.....	1
5	932 662	RK-LAGER 6004 TNH C4 BALL BEARING 6004TNH C4, 20-42-12 CUSCINETTO 6004 TNH C4, 20-42-12.....	1
6	230 790	WD-RING A 58X70X6 NBR / OIL SEAL 58X70X6 PARAOLIO 58X70X6.....	1
7	930 265	WD-RING AS 20X35X7 NBR OIL SEAL 20X35X6/6,5 PARAOLIO 20X35X6/6,5.....	1
8	831 740	WD-RING A 12X30X6 NBR / OIL SEAL 12X30X6 PARAOLIO 12X30X6.....	1
9	230 690	WD-RING AS 14X24X7 NBR / OIL SEAL 14X24X7 PARAOLIO 14X24X7.....	1
10	224 090	ABLAUFROHR / TUBE / TUBO.....	2
11	237 585	PUMPENWELLE / PUMP SHAFT / ALBERO POMPA..	1
12	929 560	SPANNHUELSE 2X8 DIN 1481 / DOWEL TUBE 2X8 BUSSOLA SPACCATA 2X8.....	1
13	235 707	PUMPENRAD 22 Z / PUMP GEAR 22 T., INGRANAGGIO POMPA 22 D.,.....	1
14	945 751	FEDERRING DIN 128-A6-FST / LOCK WASHER A6 RONDELLA SPACCATA A6.....	1

BILD-NR. ILL. NO. FIG.	TEILE-NR. PART NO. CODICE	B E Z E I C H N U N G D E S C R I P T I O N D E S C R I Z I O N E	STUECK QTY. QTA.
15	842 042	SICHERUNGSMUTTER N M6 DIN 980 LOCK NUT M6 / DADO DI SICUREZZA M6..... ANZUGSDREHMOMENT 10 NM TIGHTENING TORQUE 10 NM (90 IN.LB.) COPPIA DI SERRAGGIO 10 NM	2
16	239 930	TELLERFEDER A16 DIN 2093 SPRING WASHER A16 / MOLLA A16.....	1
17	227 155	REIBSCHEIBE / FRICTION WASHER RONDELLA GROWER.....	1
18	922 036	LAUFRAD / IMPELLER / GIRANTE.....	1
19	244 211	SCHEIBE 6,4 DIN 134 / WASHER 6,4 RONDELLA 6,4.....	1
20	831 615	DICHTUNG / GASKET / GUARNIZIONE.....	1
21	222 066	WASSERPUMPENGEHAEUSE / WATER PUMP HOUSING CORPO POMPA ACQUA..... STANDARD STANDARD STANDARD	1
21	N 922 050	WASSERPUMPENGEHAEUSE / WATER PUMP HOUSING CARTER POMPA ACQUA..... OPTION, OHNE ABBILDUNG OPTION, WITHOUT ILLUSTRATION OPTION, SENZA ILLUSTRAZIONE	1
22	240 480	VERSCHLUSSSCHRAUBE 1/8-27NPT PLUG SCREW 1/8-27NPT / TAPPO 1/8-27NPT...	1
23	840 861	ZYL.SCHRAUBE M6X25 DIN 912 ALLEN SCREW M6X25 / BRUGOLA M6X25.....	4
24	840 880	ZYL.SCHRAUBE M6X30 DIN 912 ALLEN SCREW M6X30 / BRUGOLA M6X30..... ANZUGSDREHMOMENT 10 NM TIGHTENING TORQUE 10 NM (90 IN.LB.) COPPIA DI SERRAGGIO 10 NM	9
25	241 811	ZYL.SCHRAUBE M6X35 DIN 912 ALLEN SCREW M6X35 / BRUGOLA M6X35..... ANZUGSDREHMOMENT 10 NM TIGHTENING TORQUE 10 NM (90 IN.LB.) COPPIA DI SERRAGGIO 10 NM	2
26	830 890	DICHTRING 6,2/8,9/1 GASKET RING 6,2/8,9/1 ANELLO GUARNIZIONE 6,2/8,9/1.....	2
27	N 841 331	ZYL.SCHRAUBE M6X12 DIN 912 ALLEN SCREW M6X12 / BRUGOLA M6X12.....	2

BILD-NR. ILL. NO. FIG.	TEILE-NR. PART NO. CODICE	B E Z E I C H N U N G D E S C R I P T I O N D E S C R I Z I O N E	STUECK QTY. QTA.
28	222 030	KUEHLWASSERSCHLAUCH KURZ WATER TUBE SHORT / TUBO ACQUA CORTO.....	1
29	222 020	KUEHLWASSERSCHLAUCH LANG WATER TUBE LONG / TUBO ACQUA LUNGO.....	1
30	N 951 870	SCHNECKENGEWINDESCHELLE 16-25 CLAMP 16-25 / FASCETTA 16-25.....	4
31	241 925	ENTLUEFTERSCHRAUBE M18X1,5 AIR VENT SCREW M18X1,5 TAPPO SFIATO M18X1,5.....	1
32	210 462	DREHSCHIEBERDECKEL V / DISC VALVE COVER COPERCHIO VALVOLA ROTANTE.....	1
33	230 310	O-RING DIN 3771-114X2-N / O-RING 114-2 ANELLO OR 114-2.....	2
34	430 211	DICHTUNGSSCHNUR 3,3X8 / RUBBER PLUG 3,3X8 GUARNIZIONE GOMMA 3,3X8.....	2
35	210 466	DREHSCHIEBERDECKEL H / DISC VALVE COVER COPERCHIO VALVOLA ROTANTE.....	1
36	241 930	ZYL.SCHRAUBE M6X20 DIN 912 ALLEN SCREW M6X20 / BRUGOLA M6X20..... ANZUGSDREHMOMENT 10 NM TIGHTENING TORQUE 10 NM (90 IN.LB.) COPPIA DI SERRAGGIO 10 NM	8
37 - 38	267 847	VERGASERSTUTZEN KPL. RUBBER FLANGE ASSY., FLANGIA CARBURATORE CPL.,.....	1
38	N 251 820	SCHLAUCHSCHELLE 47 / HOSE CLAMP 47 FASCETTA 47.....	2
39	250 311	SCHEIBE 8,4 DIN 125 / WASHER 8,4 RONDELLA 8,4.....	4
40	440 091	ZYL.SCHRAUBE M8X20 DIN 7984 ALLEN SCREW M8X20 / BRUGOLA M8X20..... ANZUGSDREHMOMENT 10 NM TIGHTENING TORQUE 10 NM (90 IN.LB.) COPPIA DI SERRAGGIO 10 NM	4
41	899 785	SCHRAUBENSICHERUNG NIEDRIGFEST LOCTITE 221 VIOLET 10 CC., LOCTITE 221 VIOLETTA, 10 CC.,..... 10 CCM. LOW STRENGTH BOND PASTA FISSAGGIO VITI, DEBOLE	N BED AS REQ A RICH

BILD-NR.	TEILE-NR.	B E Z E I C H N U N G	STUECK
ILL. NO.	PART NO.	D E S C R I P T I O N	QTY.
FIG.	CODICE	D E S C R I Z I O N E	QTA.

42	297 386	SILASTIC 732 RTV	N BED
		SILASTIC 732 RTV, 100 GR.,	AS REQ
		SILASTIC 732 RTV, 100 GR.,.....	A RICH
		100 GR.	
43	899 784	LOCTITE 574 ORANGE	N BED
		LOCTITE 574 ORANGE 50 CC.,	AS REQ
		LOCTITE 574 ARANCIO 50 CC.,.....	A RICH
		FLAECHENDICHTMITTEL, 50 CCM.	
		SEALING COMPOUND	
		PASTA GUARNIZIONE	
44		.	N BED
		.	AS REQ
		A RICH
		BP-ENERGREASE LZ	



KUPPLUNG, AUSRUECKSYSTEM
CLUTCH, CLUTCH RELEASE SYSTEM
FRIZIONE, CHIOCCIOLA

BILD-NR. ILL. NO. FIG.	TEILE-NR. PART NO. CODICE	B E Z E I C H N U N G D E S C R I P T I O N D E S C R I Z I O N E	STUECK QTY. QTA.
1	227 590	ANLAUFSCHLEIBE 20,2/35/1,5 THRUST WASHER 20,2/35/1,5 RASAMENTO 20,2/35/1,5.....	2
2	227 600	ANLAUFSCHLEIBE 20,2/35/3 THRUST WASHER 20,2/35/3 RASAMENTO 20,2/35/3.....	1
3	232 700	INNENRING / INNER RACE / BOCCOLA.....	1
4	232 890	NADELKAFIG K 25X29X17 NEEDLE BEARING 25X29X17 GABBIA A RULLI 25X29X17.....	1
5	430 370	O-RING DIN 3771-20,3X2,4-N O-RING 20,3-2,4 / ANELLO OR 20,3-2,4.....	1
6	235 687	KUPPLUNGSRAD 58/18 Z CLUTCH GEAR 58/18 T., PIGNONE FRIZIONE 58/18 D.,..... FUEER AUSFUEHRUNG R O A D - R A C E R UND FUEER AUSFUEHRUNG K A R T FOR CONFIGURATION R O A D - R A C E R AND FOR CONFIGURATION K A R T PER ESECUZIONE R O A D - R A C E R E PER ESECUZIONE K A R T	1
7	230 910	O-RING DIN 3771-34X2-N / O-RING 34X2 ANELLO OR 34X2.....	1
8	259 980	KUPPLUNGSKORB / CLUTCH DRUM CAMPANA FRIZIONE.....	1
9	840 510	ZYL.SCHRAUBE M5X16 DIN 912 ALLEN SCREW M5X16 / BRUGOLA M5X16..... ANZUGSDREHMOMENT 7 NM TIGHTENING TORQUE 7 NM (60 IN.LB.) COPPIA DI SERRAGGIO 7 NM	6
10	259 570	STUETZTELLER / INNER PRESSURE PLATE PIATTO PORTAMOLLE.....	1
11	259 558	INNENLAMELLE / CLUTCH PLATE 1,0 MM DISCO FRIZIONE 1,0 MM.....	2
12	259 556	STUETZLAMELLE / CLUTCH PLATE 1,5 MM DISCO FRIZIONE 1,5 MM.....	4

BILD-NR. ILL. NO. FIG.	TEILE-NR. PART NO. CODICE	B E Z E I C H N U N G D E S C R I P T I O N D E S C R I Z I O N E	STUECK QTY. QTA.
13	259 990	SINTERLAMELLE 3,0 MM / SINTERPLATE 3,0 MM DISCO FRIZ. SINTERIZZATO 3,0 MM.....	5
14	259 064	MITNEHMER / CLUTCH HUB / MOZZO FRIZIONE..	1
15	245 320	SICHERUNGSBLECH NA20 / TAB WASHER NA20 RONDELLA SICUREZZA NA20.....	1
16	242 605	SK-MUTTER M18X1,5 / HEX. NUT M18X1,5 DADO M18X1,5..... ANZUGSDREHMOMENT 90 NM TIGHTENING TORQUE 90 NM (800 IN.LB.) COPPIA DI SERRAGGIO 90 NM	1
17	239 740	KUPPL.FEDER DM15,7 D2,4 L39 CLUTCH SPRING 39 MM MOLLA FRIZIONE 39 MM..... FEDERN NUR SATZWEISE WECHSELN CHANGE SPRINGS ONLY SETWISE CAMBIARE SOLO TUTTA LA SERIE	6
18	N 259 295	DRUCKRING / PRESSURE RING PIATO DI SPINTA.....	1
19	N 232 570	RK-LAGER 629-2RS C3 BALL BEARING 2RS C3, 9-26-8 CUSCINETTO 2RS C3, 9-26-8.....	1
20	N 259 300	DRUCKPILZ / THRUST HUB / FUNGO DI SPINTA.	1
21	N 259 290	DRUCKPLATTE / RETAINING PLATE PIATTO DI SPINTA.....	1
22	N 244 030	HALTELASCHE / ATTACHE / PIASTRINA.....	2
23	241 771	SK-SCHRAUBE M5X25 DIN 933 HEX. SCREW M5X25 / VITE ESAGONALE M5X25.. ANZUGSDREHMOMENT 7 NM TIGHTENING TORQUE 7 NM (60 IN.LB.) COPPIA DI SERRAGGIO 7 NM	6
24 - 26	N 259 286	KUPPLUNGSWIDERLAGER KPL. CLUTCH BRACKET ASSY., SUPPORTO FRIZIONE CPL.,.....	1
25	N 232 275	NADELHUELSE 8X12X8 NEEDLE BUSHING 8X12X8 GABBIA A RULLI 8X12X8.....	1
26	N 232 480	NADELHUELSE 12X16X10 NEEDLE BUSHING 12X16X10 GABBIA A RULLI 12X16X10.....	1
27	N 220 030	AUSRUECKWELLE / CLUTCH RELEASE SHAFT ALBERO DISTACCO FRIZIONE.....	1

BILD-NR. ILL. NO. FIG.	TEILE-NR. PART NO. CODICE	B E Z E I C H N U N G D E S C R I P T I O N D E S C R I Z I O N E	STUECK QTY. QTA.
28	N 845 390	SICHERUNGSSCHEIBE DIN 6799-8 RETAINING RING 8 / SEEGER 8.....	1
29	N 229 350	AUSRUECKBOLZEN / CLUTCH RELEASE PIN PERNO SITACCO FRIZIONE.....	1
30	N 248 300	AUSRUECKHEBEL / CLUTCH RELEASE LEVER LEVA DISINNESTO FRIZIONE.....	1
31	N 840 401	ZYL.SCHRAUBE M6X22 DIN 912 ALLEN SCREW M6X22 / BRUGOLA M6X22..... ANZUGSDREHMOMENT 7 NM TIGHTENING TORQUE 7 NM (60 IN.LB.) COPPIA DI SERRAGGIO 7 NM	1
32	N 239 190	RUECKZUGFEDER / RETAINING SPRING / MOLLA.	1
33	N 241 930	ZYL.SCHRAUBE M6X20 DIN 912 ALLEN SCREW M6X20 / BRUGOLA M6X20..... ANZUGSDREHMOMENT 10 NM TIGHTENING TORQUE 10 NM (90 IN.LB.) COPPIA DI SERRAGGIO 10 NM	3
34	297 386	SILASTIC 732 RTV SILASTIC 732 RTV, 100 GR., SILASTIC 732 RTV, 100 GR.,..... 100 GR.	N BED AS REQ A RICH
35	899 785	SCHRAUBENSICHERUNG NIEDRIGFEST LOCTITE 221 VIOLET 10 CC., LOCTITE 221 VIOLETTO, 10 CC.,..... 10 CCM. LOW STRENGTH BOND PASTA FISSAGGIO VITI, DEBOLE	N BED AS REQ A RICH
36	297 431	LOCTITE ANTI-SEIZE 76710 LOCTITE ANTI-SEIZE 10 GR., LOCTITE ANTI-SEIZE 10 GR.,..... ZUR VERHINDERUNG VON PASSUNGSROST, 10 GR. TO PREVENT METAL GALLING PER EVITARE CORROSIONE	N BED AS REQ A RICH

KOLBEN, ZYLINDER, AUSPUFFSCHIEBER, BRENNRAUM-
EINSATZ, ZYLINDERKOPFDECKEL
PISTON, CYLINDER, EXHAUST VALVE, COMBUSTION
CHAMBER INSERT, CYLINDER HEAD
PISTONE, CILINDRO, GHIGLIOTTINA, INSERTO CAMERA
COMBUSTIONE, TESTA CILINDRO

BILD-NR. ILL. NO. FIG.	TEILE-NR. PART NO. CODICE	B E Z E I C H N U N G D E S C R I P T I O N D E S C R I Z I O N E	STUECK QTY. QTA.
1	N 932 026	KOLBENBOLZENKAEFIG K 15X19X20 NEEDLE CAGE K 15X19X20 GABBIA A RULLI 15X19X20.....	2
2 - 3	N 294 650	KOLBEN KPL. 53,94/53,95 MM PISTON ASSY. 53,94/53,95 MM PISTONE CPL. 53,94/53,95 MM..... BESCHICHTET, STANDARD COATED, STANDARD RICOPERTI, STANDARD	2
2 - 3	N 294 651	KOLBEN KPL. 53,96 MM PISTON ASSY. 53,96 MM PISTONE CPL. 53,96 MM..... BESCHICHTET, 1. UEBERMASSE COATED, 1ST OVERSIZE RICOPERTI, 1A MAGGIORAZIONE	2
2 - 3	N 294 652	KOLBEN KPL. 53,97 MM PISTON ASSY. 53,97 MM PISTONE CPL. 53,97 MM..... BESCHICHTET, 2. UEBERMASSE COATED, 2ND OVERSIZE RICOPERTI, 2A MAGGIORAZIONE	2
2 - 3	N 294 653	KOLBEN KPL. 53,98 MM PISTON ASSY. 53,98 MM PISTONE CPL. 53,98 MM..... BESCHICHTET, 3. UEBERMASSE COATED, 3RD OVERSIZE RICOPERTI, 3A MAGGIORAZIONE	2
3	215 540	R-RING IS2-54/49,4X1 RECTANGULAR RING 54,0 MM SEGMENTO R 54,0 MM.....	2
4	N 216 138	KOLBENBOLZEN 15X10/12X45,6 PISTON PIN 15X10/12X45,6 SPINOTTO 15X10/12X45,6.....	2
5	945 635	NULLHAKENRING 15 / CIRCLIP 15 ANELLO 15..... NUR EINMAL VERWENDBAR USE ONLY ONCE USARE SOLO UNA VOLTA	4

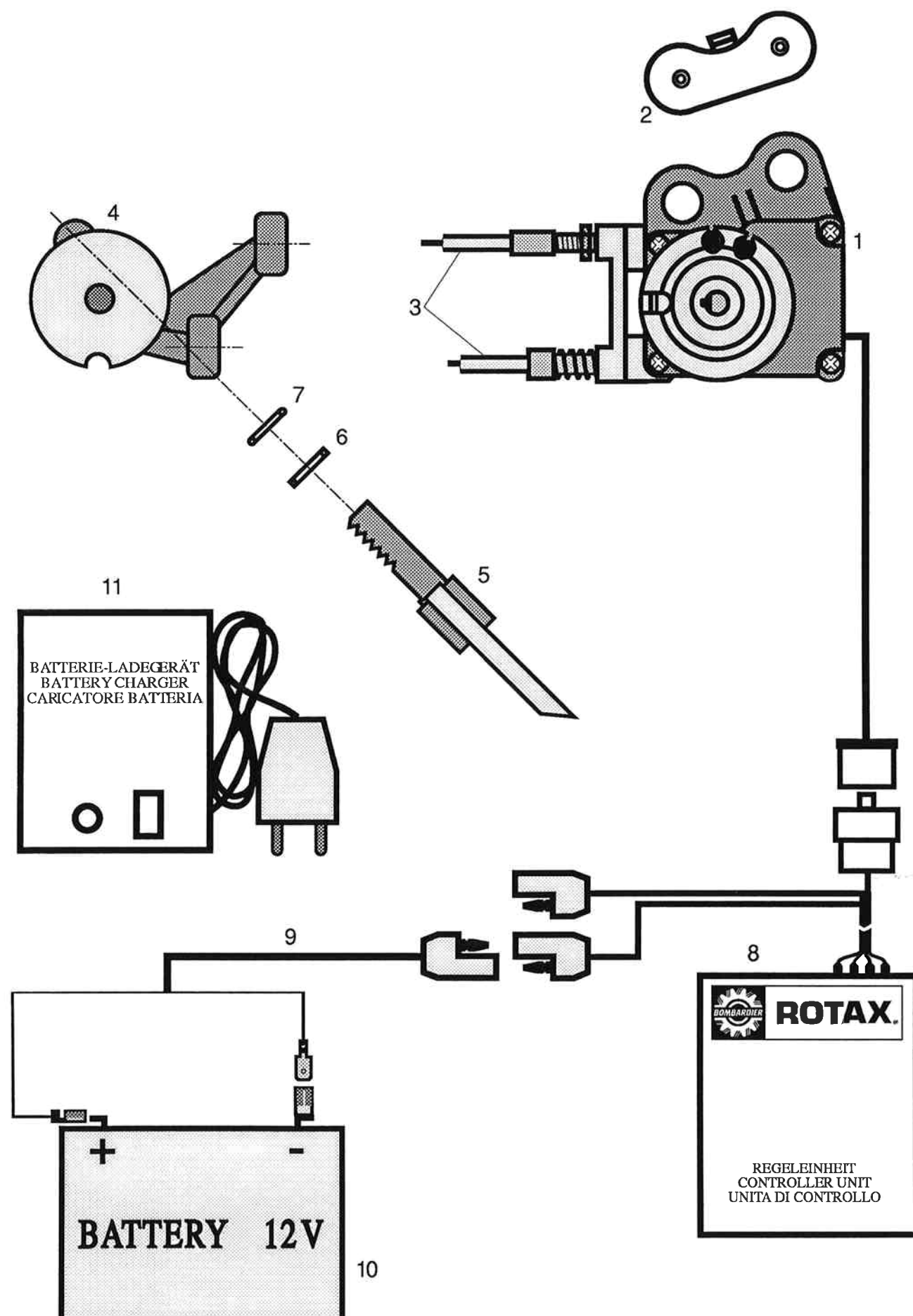
BILD-NR. ILL. NO. FIG.	TEILE-NR. PART NO. CODICE	B E Z E I C H N U N G D E S C R I P T I O N D E S C R I Z I O N E	STUECK QTY. QTA.
6	N 250 124	DICHTUNG VULKANFIBER 0,8 GASKET 0,8 MM GURNIZIONE 0,8 MM.....	N BED AS REQ A RICH
6	N 250 600	DICHTUNG AL 0,6 GASKET AL 0,6 MM GUARNIZIONE AL 0,6 MM.....	N BED AS REQ A RICH
6	N 250 601	DICHTUNG AL 0,5 GASKET AL 0,5 MM GUARNIZIONE AL 0,5 MM.....	N BED AS REQ A RICH
6	N 250 602	DICHTUNG AL 0,4 GASKET AL 0,4 MM GUARNIZIONE AL 0,4 MM.....	N BED AS REQ A RICH
6	N 250 603	DICHTUNG AL 0,3 GASKET AL 0,3 MM GUARNIZIONE AL 0,3 MM.....	N BED AS REQ A RICH
6	N 250 604	DICHTUNG AL 0,2 GASKET AL 0,2 MM GUARNIZIONE 0,2 MM.....	N BED AS REQ A RICH
7 - 28	293 814	NIKASILZYLINDER MIT APS KPL. CYL. WITH EXHAUST VALVE ASSY., CILINDRO CON VALVOLA SCARICO CPL.....	2
7	N 223 565	NIKASILZYLINDER APS / NIKASIL CYLINDER CILINDRO NIKASIL..... AUSFUEHRUNG M I T AUSLASSSCHIEBER ROT 54,000 - 54,012 MM, GRUEN 54,013 - 54,025 MM CONFIGURATION W I T H EXHAUST VALVE RED 54,000 - 54,012 MM (2,126 - 2,1265 INCH) GREEN 54,013 - 54,025 MM (2,1265 - 2,127 INCH) ESECUZIONE C O N VALVOLA SCARICO ROSSO 54,000 - 54,012 MM, VERDE 54,013 - 54,025 MM	2
8	253 245	SCHIEBERSTANGE / VALVE ROD / ASTINA.....	2
9	249 022	GEWINDEHUELSE M6 / THREAD SLEEVE M6 BUSSOLA FILETTATA M6.....	2
10	N 253 237	AUSLASSSCHIEBER / EXHAUST VALVE SLIDE GHIGLIOTTINA.....	2
11	247 580	DISTANZRING 12,1/14,7/2 DISTANCE RING 12,1/14,7/2 SPESSORE 12,1/14,7/2.....	4

BILD-NR. ILL. NO. FIG.	TEILE-NR. PART NO. CODICE	B E Z E I C H N U N G D E S C R I P T I O N D E S C R I Z I O N E	STUECK QTY. QTA.
11	247 580	DISTANZRING 12,1/14,7/2 DISTANCE RING 12,1/14,7/2 SPESSORE 12,1/14,7/2..... ZUM EINSTELLEN DES AUSLASSSCHIEBER= SCHALTPUNKTES TO ADJUST EXHAUST VALVE SWITCH POINT PER AGGIUSTARE PUNTO DI ATTIVAZIONE DELLA GHIGLIOTTINA	N BED AS REQ A RICH
12	230 260	O-RING DIN 3771-6X3-N / O-RING 6X3 ANELLO OR 6X3.....	2
13	927 941	SCHEIBE 6,0/12/1 WASHER 6,0/12/1 RONDELLA 6,0/12/1..... ZUM EINSTELLEN DES AUSLASSSCHIEBERWEGES TO ADJUST SLIDE LENGTH OF EXHAUST VALVE PER AGGIUSTARE LUNGHEZZA GHIGLIOTTINA	N BED AS REQ A RICH
14	239 944	DRUCKFEDER DM13,3 DO,9 L48,5 COMPRESSION SPRING 48,5 / 0,9 MM MOLLA 48,5 / 0,9 MM.....	2
15	230 250	DICHTUNG / GASKET / GUARNIZIONE.....	2
16	253 350	SCHIEBERSTANGENFUEHRUNG VALVE ROD HOUSING / CORPO GUIDAVALVOLA...	2
17	945 751	FEDERRING DIN 128-A6-FST / LOCK WASHER A6 RONDELLA SPACCATA A6.....	4
18	241 930	ZYL.SCHRAUBE M6X20 DIN 912 ALLEN SCREW M6X20 / BRUGOLA M6X20.....	4
19	260 720	SCHIEBERBALG / BELLOWS / SOFFIETTO.....	2
20	866 710	KABELBINDER 20 MM / CLAMP 20 MM FASCETTA 20 MM.....	2
21	242 771	SK-MUTTER M6 BIW / HEX. NUT M6 / DADO M6.	2
22	227 900	FIXIERSCHEIBE 6,2/20/2 / WASHER 6,2/20/2 RONDELLA 6,2/20/2.....	4
23	253 250	SCHIEBERKOLBEN / VALVE PISTON PISTONE VALVOLA.....	2
24	842 040	SICHERUNGSMUTTER N M6 DIN 980 LOCK NUT M6 / DADO DI SICUREZZA M6.....	2
25	239 040	SCHLAUCHFEDER 134-2,3-0,4-0,0 HOSE SPRING 134-2,3-0,4-0,0 MOLLA 134-2,3-0,4-0,0.....	2

BILD-NR. ILL. NO. FIG.	TEILE-NR. PART NO. CODICE	B E Z E I C H N U N G D E S C R I P T I O N D E S C R I Z I O N E	STUECK QTY. QTA.
26	929 650	STECKKERBSTIFT 5X10 DIN 1474 DRIVE PIN 5X10 / PERNO 5X10.....	4
27	950 141	DICHTRING A 8X13 DIN 7603 GASKET RING A 8X13 ANELLO GUARNIZIONE A 8X13.....	2
28	940 961	ZYL.SCHRAUBE M8X10 DIN 7984 ALLEN SCREW M8X10 / BRUGOLA M8X10.....	2
29	223 535	NIKASILZYLINDER / NIKASIL CYLINDER CILINDRO NIKASIL..... AUSFUEHRUNG O H N E AUSLASSSCHIEBER ROT 54,000 - 54,012 MM, GRUEN 54,013 - 54,025 MM CONFIGURATION W I T H O U T EXHAUST VALVE RED 54,000 - 54,012 MM (2,126 - 2,1265 INCH) GREEN 54,013 - 54,025 MM (2,1265 - 2,127 INCH) ESECUZIONE S E N Z A VALVOLA SCARICO ROSSO 54,000 - 54,012 MM, VERDE 54,013 - 54,025 MM	2
30	224 090	ABLAUFROHR / TUBE / TUBO.....	4
31	240 170	VERSCHLUSSSCHRAUBE M18X1,5 PLUG SCREW M18X1,5 / TAPPO M18X1,5.....	4
32	247 520	STUFENHUELSE / GRADUATED SPACER 43 MM BUSSOLA GRADINATA 43 MM..... 43 MM LANG 43 MM LONG LUNGHEZZA 43 MM	4
33	247 525	STUFENHUELSE / GRADUATED SPACER 27 MM BUSSOLA GRADINATA 27 MM..... 27 MM LANG 27 MM LONG LUNGHEZZA 27 MM	4
34	831 765	O-RING DIN 3771-135X2,5-N O-RING 135-2,5 / ANELLO OR 135-2,5.....	2
35	250 190	O-RING DIN 3771-62X2-N / O-RING 62-2 ANELLO OR 62-2.....	2
36	223 335	BRENNRAUMEINSATZ COMBUSTION CHAMBER INSERT INSERTO CAMERA COMBUSTIONE..... MIT GUSSKOLBEN 294 650 FUER VERDICHTUNG 13,8 STANDARD WITH CAST PISTON 294 650 FOR COMPRESSION 13,8 STANDARD CON PISTONE FUSO 294 650 PER COMPRESSIONE 13,8 STANDARD	2

BILD-NR. ILL. NO. FIG.	TEILE-NR. PART NO. CODICE	B E Z E I C H N U N G D E S C R I P T I O N D E S C R I Z I O N E	STUECK QTY. QTA.
36	N 223 339	BRENNRAUMEINSATZ COMBUSTION CHAMBER INSERT INSERTO CAMERA COMBUSTIONE..... 2 MIT GUSSKOLBEN 294 650 FUER VERDICHTUNG 16,0 OPTION WITH CAST PISTON 294 650 FOR COMPRESSION 16,0 OPTION CON PISTONE FUSO 294 650 PER COMPRESSIONE 16,0 OPTION	
36	N 223 333	BRENNRAUMEINSATZ COMBUSTION CHAMBER INSERT INSERTO CAMERA COMBUSTIONE..... 2 OPTION, OHNE BRENNRAUMBEARBEITUNG OPTION, NOT MACHINED COMBUSTION CHAMBER OPTION, SENZA LAVORAZIONE CAMERA COMBUSTIONE	
37	430 140	O-RING DIN 3771-26,2X3-N / O-RING 26,2-3 ANELLO OR 26,2-3..... 2	
38	223 320	ZYLINDERKOPFDECKEL / CYLINDER HEAD COVER COPERCHIO TESTA CILINDRO..... 2	
39	N 240 326	SK-BUNDSCHRAUBE M8X53,5 SW 11 COLLAR-HEX SCREW M8X53,5 SW 11 VITE ESAGONALE M8X53,5 SW 11..... 12 ANZUGSDREHMOMENT 20 NM TIGHTENING TORQUE 20 NM (180 IN.LB.) COPPIA DI SERRAGGIO 20 NM	
40	930 560	DICHTRING 8,1/12/1 / GASKET RING 8,1/12/1 RONDELLA GUARNIZIONE 8,1/12/1..... 2	
41	940 552	SCHLAUCHTUELLE M8 / HOSE NIPPLE M8 RACCORDO M8..... 1 FUER HINTEREN ZYLINDERKOPFDECKEL FOR CYLINDER HEAD COVER, REAR PER COPERCHIO TESTA CILINDRO, POSTERIORE	
42	940 251	SK-SCHRAUBE M8X9 DIN 933 HEX. SCREW M8X9 / VITE ESAGONALE M8X9..... 1 FUER VORDEREN ZYLINDERKOPFDECKEL FOR CYLINDER HEAD COVER, FRONT PER COPERCHIO TESTATA CILINDRO, ANTERIORE	
43	230 930	DICHTUNG / GASKET / GUARNIZIONE..... 2	
44	N 273 752	AUSPUFFSTUTZEN / EXHAUST SOCKET FLANGIA SCARICO..... 2	
45	224 250	FEDEREINHAENGUNG / SPRING BRACKET COPRIGIUNTO..... 2	
46	945 751	FEDERRING DIN 128-A6-FST / LOCK WASHER A6 RONDELLA SPACCATA A6..... 4	

BILD-NR. ILL. NO. FIG.	TEILE-NR. PART NO. CODICE	B E Z E I C H N U N G D E S C R I P T I O N D E S C R I Z I O N E	STUECK QTY. QTA.
47	241 930	ZYL.SCHRAUBE M6X20 DIN 912 ALLEN SCREW M6X20 / BRUGOLA M6X20..... ANZUGSDREHMOMENT 10 NM TIGHTENING TORQUE 10 NM (90 IN.LB.) COPPIA DI SERRAGGIO 10 NM	6
48	899 785	SCHRAUBENSICHERUNG NIEDRIGFEST LOCTITE 221 VIOLET 10 CC., LOCTITE 221 VIOLETTO, 10 CC.,..... 10 CCM. LOW STRENGTH BOND PASTA FISSAGGIO VITI, DEBOLE	N BED AS REQ A RICH
49	899 788	LOCTITE 648 GRUEN LOCTITE 648 GREEN, 5 GR., LOCTITE 648 VERDE, 5 GR.,..... SCHRAUBENSICHERUNG, HOCHFEST, 5 GR. HIGH STRENGTH BOND PASTA FISSAGGIO VITI, FORTE	N BED AS REQ A RICH
50	297 386	SILASTIC 732 RTV SILASTIC 732 RTV, 100 GR., SILASTIC 732 RTV, 100 GR.,..... 100 GR.	N BED AS REQ A RICH
51	297 431	LOCTITE ANTI-SEIZE 76710 LOCTITE ANTI-SEIZE 10 GR., LOCTITE ANTI-SEIZE 10 GR.,..... ZUR VERHINDERUNG VON PASSUNGSROST, 10 GR. TO PREVENT METAL GALLING PER EVITARE CORROSIONE	N BED AS REQ A RICH

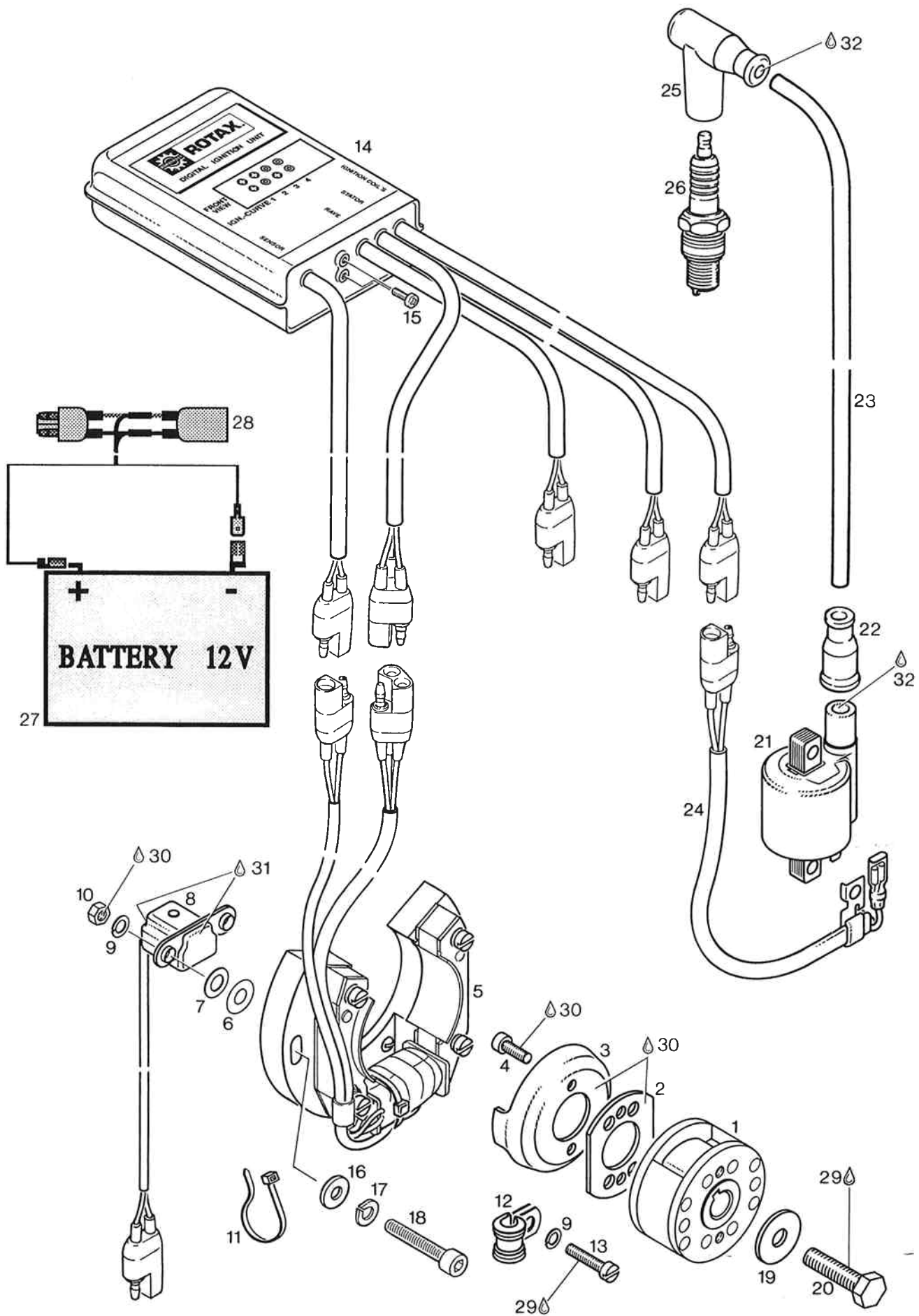


ELEKTRONISCH GESTEUERTER AUSPUFFSCHIEBER
ELECTRONICALLY COMMANDED EXHAUST VALVE
VALVOLA SCARICO A COMANDO ELETTRONICO

OPTION

BILD-NR. ILL. NO. FIG.	TEILE-NR. PART NO. CODICE	B E Z E I C H N U N G D E S C R I P T I O N D E S C R I Z I O N E	STUECK QTY. QTA.
1 - 10 N	294 621	DIGIRAVE KIT / DIGITAL EXHAUST VALVE KIT KIT VALVOLA SCARICO DIGITALE.....	1
1	N 294 605	STELLMOTOR KPL. / SERVO MOTOR ASSY., SERVO MOTORE CPL.,.....	1
2	N 260 010	DAEMPFERGUMMI / SILENT BLOCK SILENT BLOCK.....	1
3	N 297 800	SEILZUG OBEN KPL. BOWDEN CABLE, UPPER ASSY., CAVO BOWDEN, SUPERIORE CPL.,..... KURZ SHORT CORTO	1
3	N 297 805	SEILZUG UNTEN KPL. BOWDEN CABLE, LOWER ASSY., CAVO BOWDEN, INFERIORE CPL.,..... LANG LONG LUNGO	1
4	N 294 610	SCHIEBERANTRIEB KPL. / VALVE DRIVE ASSY., AZIONAMENTO VALVOLA CPL.,.....	2
5	N 253 655	AUSLASSSCHIEBER KPL. EXHAUST VALVE ASSY., VALVOLA SCARICO CPL.,.....	2
6	N 927 955	SCHEIBE 10,3/14,8/0,5 SHIM 10,3/14,8/0,5 RONDELLA 10,3/14,8/0,5..... ZUM EINSTELLEN DES AUSLASSSCHIEBERWEGES TO ADJUST SLIDE LENGTH OF EXHAUST VALVE PER AGGIUSTARE LUNGHEZZA GHIGLIOTTINA	N BED AS REQ A RICH
7	N 430 110	O-RING DIN 3771-10X2,7-N / O-RING 10X2,7 ANELLO OR 10X2,7.....	2
8	N 265 095	REGELEINHEIT KPL. / REGULATOR ASSY., UNITA DI CONTROLLO.....	1
9	N 265 110	BATTERIELEITUNG KPL. BATTERY CABLE ASSY., CAVO BATTERIA CPL.,.....	1

BILD-NR.	TEILE-NR.	B E Z E I C H N U N G	STUECK
ILL. NO.	PART NO.	D E S C R I P T I O N	QTY.
FIG.	CODICE	D E S C R I Z I O N E	QTA.
<hr/>			
10	N 265 121	BATTERIE KPL. / BATTERY ASSY., BATTERIA CPL.,.....	1
11	N 265 140	BATTERIELADEGERAET BATTERY LOADER 12V/0,8A CARICATORE BATTERIA 12V/0,8A.....	1



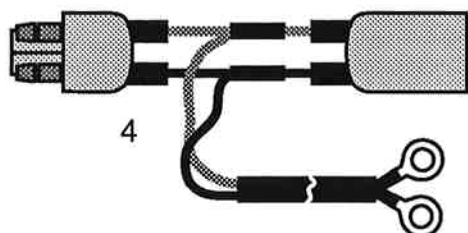
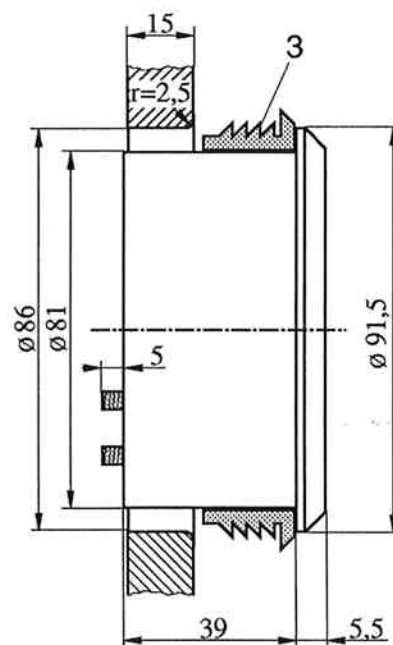
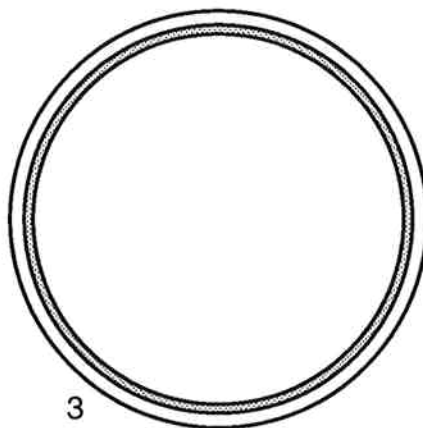
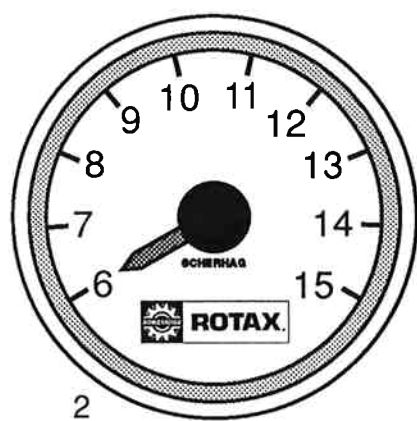
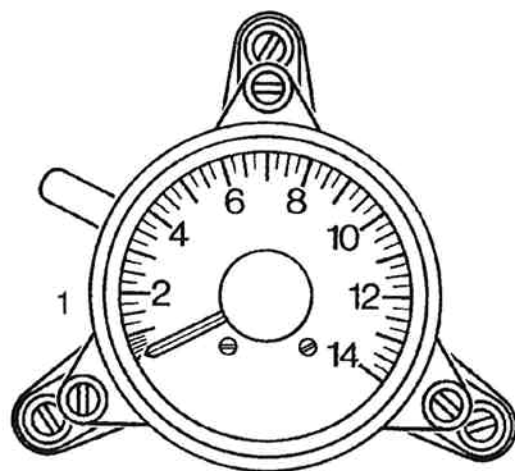
ROTAX DIGITAL ZUENDANLAGE
ROTAX DIGITAL IGNITION UNIT
ACCENSIONE DIGITALE ROTAX

BILD-NR. ILL. NO. FIG.	TEILE-NR. PART NO. CODICE	B E Z E I C H N U N G D E S C R I P T I O N D E S C R I Z I O N E	STUECK QTY. QTA.
1 - 15 N	293 946	DIGITALZUENDUNG KPL. DIGITAL IGNITION ASSY., ACCENSIONE DIGITALE CPL.,.....	1
1 - 13	293 976	ROTOR MIT STATOR KPL. ROTOR WITH STATOR ASSY., ROTORE CON STATORE CPL.,..... MARKIERT PAIRED TOGETHER ACCOPIATI	1
2	264 230	ISOLIERSCHEIBE / ISOLATING SHIM RONDELLA ISOLANTE.....	1
3	264 220	LEITSTUECK / TRIGGER CUP / COPPA PICK-UP.	1
4	240 565	FLACHKOPFSCHRAUBE M5X12 DIN 85 SLOTTED HEAD SCREW M5X12 VITE TONDA M5X12.....	2
5		• • STATOR, NICHT ALS ERSATZTEIL LIEFERBAR, KOMPLETT-TEIL 293 976 VERWENDEN STATOR, NOT AVAILABLE AS SPARE PART, USE ROTOR WITH STATOR ASSY., 293 976. STATORE, NON DISPONIBILE COME RICAMBIO, UTILIZZARE ROTORE CON STATORE CPL., 293 976.	1
6	227 940	ANLAUFSCHIEBE 7,1/16/0,5 THRUST WASHER 7,1/16/0,5 RASAMENTO 7,1/16/0,5.....	2
7	227 570	SCHEIBE 7,4 DIN 125 / WASHER 7,4 RONDELLA 7,4.....	2
8	264 082	GEBER MIT STECKER KPL. TRIGGER WITH PLUG ASSY., PICK-UP CON SPINA CPL.,.....	1
9	945 750	FEDERRING DIN 128-A5-FST / LOCK WASHER A5 RONDELLA SPACCATA A5.....	3
10	242 071	SK-MUTTER M5 DIN 934 / HEX. NUT M5 DADO ESAGONALE M5.....	2
11	866 710	KABELBINDER 20 MM / CLAMP 20 MM FASCETTA 20 MM.....	1

BILD-NR. ILL. NO. FIG.	TEILE-NR. PART NO. CODICE	B E Z E I C H N U N G D E S C R I P T I O N D E S C R I Z I O N E	STUECK QTY. QTA.
12	851 110	ROHRSCHELLE 8/M5 / CABLE CLAMP 8/M5 GRAFFA 8/M5.....	1
13	240 975	ZYL.SCHRAUBE M5X28 DIN 84 SLOTTED HEAD SCREW M5X28 VITE TONDA M5X28.....	1
14 - 15 N	265 100	ELEKTRONIKBOX / ELECTRONIC BOX CENTRALINA ELETTRONICA..... STANDARD ROAD RACER FUER ELEKTRONISCH GESTEUERTEN AUSPUFFSCHIEBER STANDARD ROAD RACER FOR ELECTRONICALLY COMMANDED EXHAUST VALVE STANDARD ROAD RACER PER VALVOLA SCARICO A COMANDO ELETTRONICO	1
14 - 15	264 268	ELEKTRONIKBOX / ELECTRONIC BOX CENTRALINA ELETTRONICA..... STANDARD KART, OHNE ABBILDUNG NICHT FUER ELEKTRONISCH GEST. AUSPUFFSCHIEBER STANDARD KART, WITHOUT ILLUSTRATION NOT FOR ELECTRONICALLY COMMANDED EXHAUST VALVE STANDARD KART, SENZA ILLUSTRAZIONE NON PER VALVOLA SCARICO A COMANDO ELETTRONICO	1
15	840 724	ZYL.SCHRAUBE M3X10 DIN 84 SLOTTED HEAD SCREW M3X10 VITE TONDA M3X10..... MESSING BRASS OTTONE	2
16	244 211	SCHEIBE 6,4 DIN 134 / WASHER 6,4 RONDELLA 6,4.....	2
17	945 751	FEDERRING DIN 128-A6-FST / LOCK WASHER A6 RONDELLA SPACCATA A6.....	2
18	241 311	ZYL.SCHRAUBE M6X35 DIN 912 ALLEN SCREW M6X35 / BRUGOLA M6X35..... ANZUGSDREHMOMENT 10 NM TIGHTENING TORQUE 10 NM (90 IN.LB.) COPPIA DI SERRAGGIO 10 NM	2
19	227 935	SCHEIBE B 8,4 DIN 9021 / WASHER 8,4 RONDELLA 8,4.....	1
20	940 481	SK-SCHRAUBE M8X30 DIN 933 HEX. SCREW M8X30 / VITE ESAGONALE M8X30.. ANZUGSDREHMOMENT 22 NM TIGHTENING TORQUE 22 NM (200 IN.LB.) COPPIA DI SERRAGGIO 22 NM	1
21 - 23	866 665	ZUENDTRANSFORMATOR WG / IGNITION COIL BOBINA ACCENSIONE.....	2

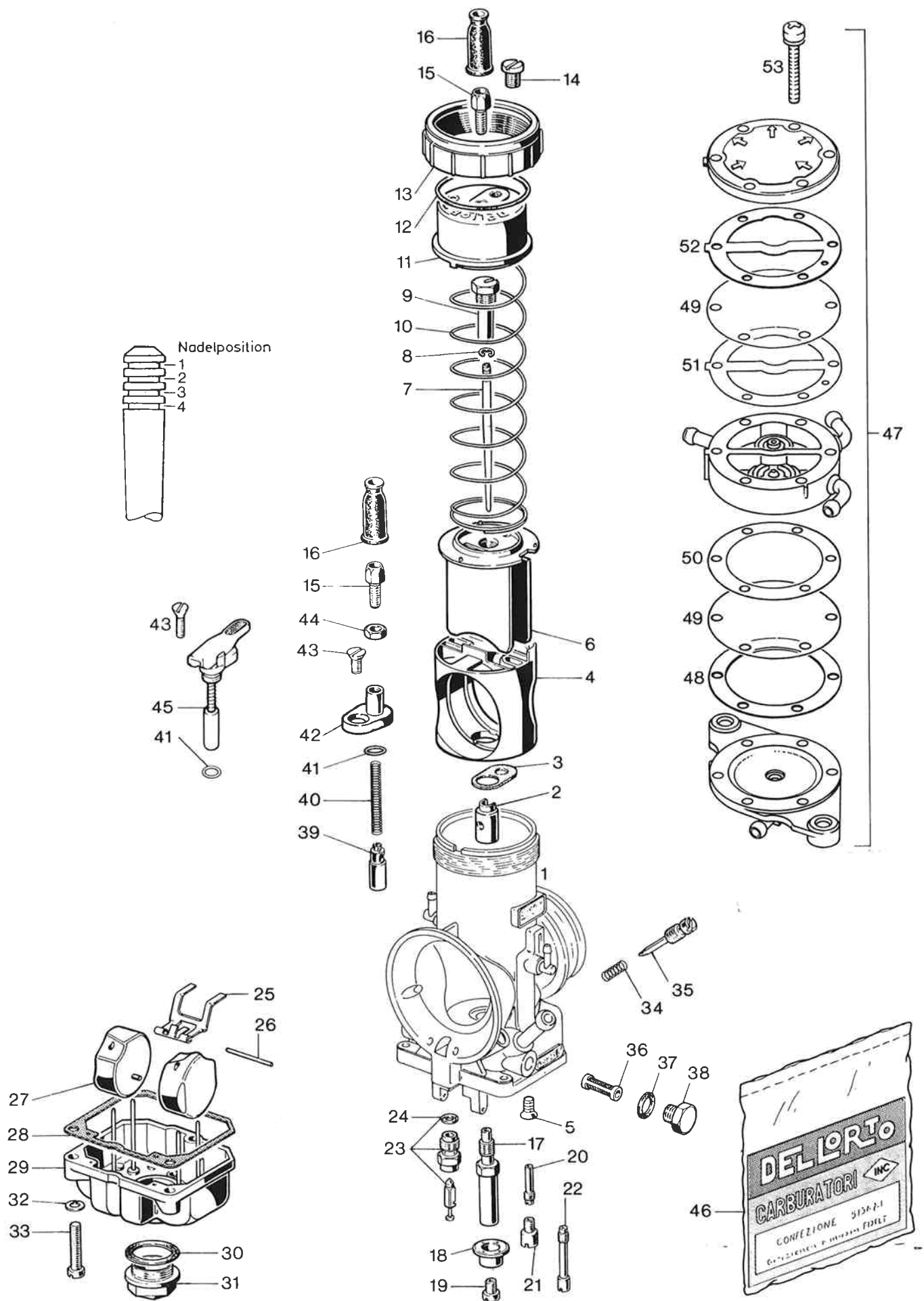
BILD-NR. ILL. NO. FIG.	TEILE-NR. PART NO. CODICE	B E Z E I C H N U N G D E S C R I P T I O N D E S C R I Z I O N E	STUECK QTY. QTA.
22	960 550	REGENSCHUTZKAPPE / PROTECTION CAP CAPPUCCIO GOMMA.....	2
23	864 296	ZUENDLEITUNG 560 MM IGNITION CABLE 560 MM FILO CANDELA 560 MM.....	2
24	965 380	STEUERLEITUNG KPL. / CABLE HARNESS ASSY., FASCIO DI CAVI CPL.,.....	2
25	N 866 708	WIDERSTANDSSTECKER SPARK PLUG CONNECTOR CAPPUCCIO CANDELA.....	N BED AS REQ A RICH
26	297 780	ZUENDKERZE 14 NGK R 4630 A-105 SPARK PLUG 14 NGK R 4630 A-105 CANDELA 14 NGK R 4630 A-105..... ANZUGSDREHMOMENT 27 NM IM KALTEN ZUSTAND ELEKTRODENABSTAND 0,5 - 0,6 MM TIGHTENING TORQUE 27 NM (240 IN.LB.), COLD ENGINE ELECTRODE GAP 0,5 - 0,6 MM (0,0197 - 0,0236 INCH) COPPIA DI SERRAGGIO 27 NM, MOTORE FREDDO Distanza elettrodi 0,5 - 0,6 MM	2
27	N 265 121	BATTERIE KPL. / BATTERY ASSY., BATTERIA CPL.,.....	1
28	N 265 130	BATTERIEADAPTER KPL. BATTERY ADAPTER ASSY., ADATTATORE BATTERIA CPL.,.....	1
29	899 785	SCHRAUBENSICHERUNG NIEDRIGFEST LOCTITE 221 VIOLET 10 CC., LOCTITE 221 VIOLETT0, 10 CC.,..... 10 CCM. LOW STRENGTH BOND PASTA FISSAGGIO VITI, DEBOLE	N BED AS REQ A RICH
30	899 788	LOCTITE 648 GRUEN LOCTITE 648 GREEN, 5 GR., LOCTITE 648 VERDE, 5 GR.,..... SCHRAUBENSICHERUNG HOCHFEST, 5 GR. HIGH STRENGTH BOND PASTA FISSAGGIO VITI, FORTE	N BED AS REQ A RICH
31	297 710	PU-KLEBER PU-GLUE, SIKAFLEX-255, 310 ML., COLLA PU, SIKAFLEX-255, 310 ML.,..... SIKAFLEX-255, ZUR SCHWINGUNGSDAEMPfung, 310 ML. FOR VIBRATION ABSORPTION PER SMORZARE VIBRAZIONI	N BED AS REQ A RICH

BILD-NR.	TEILE-NR.	B E Z E I C H N U N G	STUECK
ILL. NO.	PART NO.	D E S C R I P T I O N	QTY.
FIG.	CODICE	D E S C R I Z I O N E	QTA.
32	897 330	LITHIUMSEIFENFETT LITHIUM-BASE GREASE, 250 GR., GRASSO LITHIUM, 250 GR.,..... A RICH 250 GR., ZUR VERHINDERUNG VON KRIECHSTROEMEN TO PREVENT LEAKAGE CURRENT PER EVITARE CURRENT DI DISPERSIONE	N BED AS REQ



DREHZAHLMESSER
REVOLUTION COUNTER
CONTAGIRI

BILD-NR. ILL. NO. FIG.	TEILE-NR. PART NO. CODICE	B E Z E I C H N U N G D E S C R I P T I O N D E S C R I Z I O N E	STUECK QTY. QTA.
1	264 907	DREHZAHLMESSER SCITSU REVOLUTION COUNTER SCITSU CONTAGIRI SCITSU.....	1
		FUER ROTAX DIGITAL ZUENDANLAGE UND MOTOPLAT ZUENDANLAGE GEEIGNET CAN BE USED FOR ROTAX DIGITAL IGNITION UNIT AND FOR MOTOPLAT IGNITION UNIT APPROPRIATO PER ACCENSIONE DIGITALE ROTAX E PER ACCENSIONE MOTOPLAT	
2	N 264 908	DREHZAHLMESSER SCHERHAG REVOLUTION COUNTER SCHERHAG CONTAGIRI SCHERHAG.....	1
		FUER ROTAX DIGITAL ZUENDANLAGEN FOR ROTAX DIGITAL IGNITION UNITS PER ACCENSIONE DIGITALE ROTAX	
3	N 264 909	MONTAGERING / MOUNTING RUBBER RING PORTA-CONTAGIRI IN GOMMA.....	1
		FUER DREHZAHLMESSER 264 908 FOR REVOLUTION COUNTER 264 908 PER CONTAGIRI 264 908	
4	N 265 160	DREHZAehlerADAPTER ADAPTER FOR REV. COUNTER ADATTATORE PER CONTAGIRI.....	1
		ZUM ANSCHLUSS DES DREHZAHLMESSERS 264 908 AN DIE ROTAX DIGITAL ZUENDANLAGE FOR CONNECTION OF RPM COUNTER 264 908 TO ROTAX DIGITAL IGNITION PER CONNESSIONE DEL CONTAGIRI 264 908 ALL'ACCENSIONE DIGITALE ROTAX	



DELL'ORTO FLACHSCHIEBERVERGASER VHSB 38
 MIKUNI BENZINPUMPE DF 52-48
 DELL'ORTO FLAT SLIDE CARBURETOR VHSB 38
 MIKUNI FUEL PUMP DF 52-48
 CARBURATORE DELL'ORTO VHSB 38 A VALVOLA PIATTA
 POMPA BENZINA MIKUNI DF 52-48

BILD-NR. ILL. NO. FIG.	TEILE-NR. PART NO. CODICE	B E Z E I C H N U N G D E S C R I P T I O N D E S C R I Z I O N E	STUECK QTY. QTA.
1 - 44	294 230	DELL'ORTO-VERGASER VHSB 38 DELL'ORTO CARBURETOR VHSB 38 CARBURATORE DELL'ORTO VHSB 38.....	2
2	 ZERSTAEUBER, KEIN ERSATZTEIL DIFFUSOR NO SPARE PART POLVERIZZATORE, NON VENDUTO SEPARATAMENTE	2
3	 DICHTUNG, VERWENDE DICHTUNGSSATZ 293 835 GASKET, USE GASKET SET 293 835 GUARNIZIONE, UTILIZZARE BUSTA GUARNIZIONI 293 835	2
4	 EINSATZ, KEIN ERSATZTEIL INSERT, NO SPARE PART INSERTO GUIDA, NON VENDUTO SEPARATAMENTE	2
5	 LINSENSENKSCHEIBE M4X8, KEIN ERSATZTEIL SCREW M4X8, NO SPARE PART VITE M4X8, NON VENDUTO SEPARATAMENTE	4
6	261 360	GASSCHIEBER 40 / CARBURETOR PISTON 40 VALVOLA GAS 40..... DIESER TEIL IST SERIENMAESSIG MONTIERT THIS PART IS MOUNTED AS STANDARD QUESTO PEZZO E MONTATO STANDARD	2
6	261 361	GASSCHIEBER 35 / CARBURETOR PISTON 35 VALVOLA GAS 35.....	2

BILD-NR. ILL. NO. FIG.	TEILE-NR. PART NO. CODICE	B E Z E I C H N U N G D E S C R I P T I O N D E S C R I Z I O N E	STUECK QTY. QTA.
7	261 183	DUESENNADEL K 48 / JET NEEDLE K 48/2A SPILLO CONICO K 48/2A..... P O S.: 2 DIESER TEIL IST SERIENMAESSIG MONTIERT P O S.: 2 THIS PART IS MOUNTED AS STANDARD P O S.: 2 QUESTO PEZZO E MONTATO STANDARD	2
7	261 185	DUESENNADEL K 53 / JET NEEDLE K 53 SPILLO CONICO K 53.....	2
7	261 186	DUESENNADEL K 52 / JET NEEDLE K 52 SPILLO CONICO K 52.....	2
8	245 630	SICHERUNGSSCHEIBE / CLIP / FERMAGLIO.....	2
9	261 270	EINHAENGSCRAUBE / NIPPLE SCREW / NIPPLO.	2
10	239 885	SCHIEBERFEDER / THROTTLE VALVE SPRING MOLLA.....	2
11	261 260	FEDERGEHAEUSE / SPRING HOUSING COPERCHIO MOLLA.....	2
12		• • O-RING 38-2, VERWENDE DICHTUNGSSATZ 293 835 O-RING 38-2, USE GASKET SET 293 835 ANELLO OR 38-2, UTILIZZARE BUSTA GUARNIZIONI 293 835	2
13	261 250	DECKELVERSCHRAUBUNG / COVER SCREW GHIERA COPERCHIO.....	2
14		• • ZYLINDERSCHRAUBE M6X0,75, KEIN ERSATZTEIL SLOTTED HEAD SCREW M6X0,75, NO SPARE PART VITE M6X0,75, NON VENDUTO SEPARATAMENTE	2
15	240 510	STELLSCHRAUBE M6X0,75 ADJUSTMENT SCREW M6X0,75 / VITE M6X0,75..	4
16	260 640	GUMMITUELLE / RUBBER GROMMET / GUAINA....	4
17	261 352	NADELQUESE DQ 268 / NEEDLE JET DQ 268 POLVERIZZATORE DQ 268..... DIESER TEIL IST SERIENMAESSIG VERBAUT THIS PART IS MOUNTED AS STANDARD QUESTO PART E MONTATO STANDARD	2

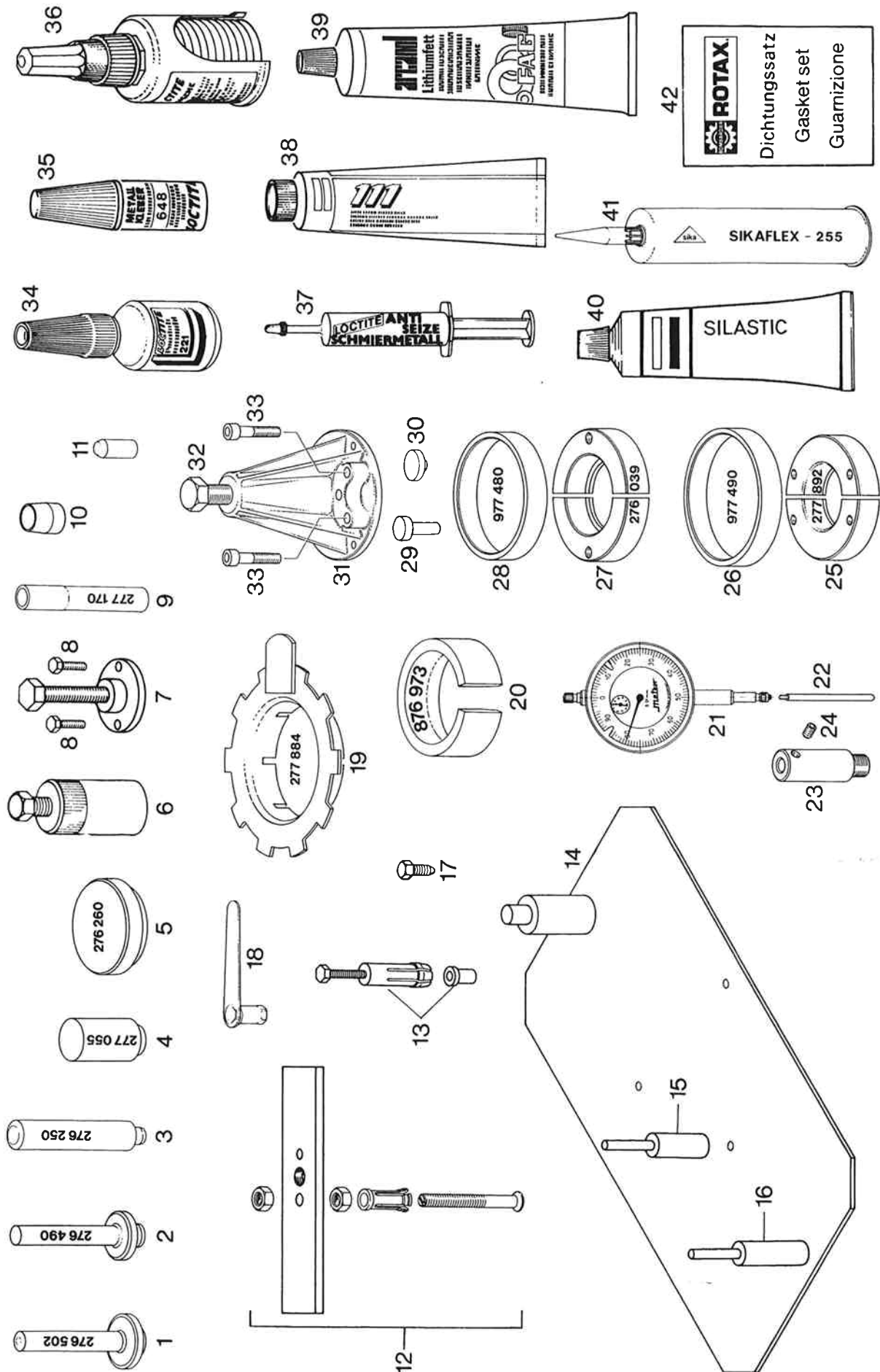
BILD-NR. ILL. NO. FIG.	TEILE-NR. PART NO. CODICE	B E Z E I C H N U N G D E S C R I P T I O N D E S C R I Z I O N E	STUECK QTY. QTA.
17	261 350	NAELEDUESE DQ 266 / NEEDLE JET DQ 266 POLVERIZZATORE DQ 266.....	2
17	261 351	NAELEDUESE DQ 270 / NEEDLE JET DQ 270 POLVERIZZATORE DQ 270.....	2
18		• • DUESENTASSE, KEIN ERSATZTEIL MAIN JET RIG, NO SPARE PART TAZZA PER GETTO, NON VENDUTO SEPARATAMENTE	2
19	261 998	HAUPTDUESE 210 / MAIN JET 210 GETTO MASSIMO 210..... DIESER TEIL IST SERIENMAESSIG MONTIERT THIS PART IS MOUNTED AS STANDARD QUESTO PEZZO E MONTATO STANDARD	2
19	261 820	HAUPTDUESE 170 / MAIN JET 170 GETTO MASSIMO 170.....	2
19	261 821	HAUPTDUESE 172 / MAIN JET 172 GETTO MASSIMO 172.....	2
19	261 822	HAUPTDUESE 175 / MAIN JET 175 GETTO MASSIMO 175.....	2
19	261 823	HAUPTDUESE 178 / MAIN JET 178 GETTO MASSIMO 178.....	2
19	261 824	HAUPTDUESE 180 / MAIN JET 180 GETTO MASSIMO 180.....	2
19	261 993	HAUPTDUESE 182 / MAIN JET 182 GETTO MASSIMO 182.....	2
19	261 825	HAUPTDUESE 185 / MAIN JET 185 GETTO MASSIMO 185.....	2
19	261 994	HAUPTDUESE 188 / MAIN JET 188 GETTO MASSIMO 188.....	2
19	261 827	HAUPTDUESE 190 / MAIN-JET 190 GETTO MASSIMO 190.....	2
19	261 828	HAUPTDUESE 192 / MAIN JET 192 GETTO MASSIMO 192.....	2
19	261 829	HAUPTDUESE 195 / MAIN JET 195 GETTO MASSIMO 195.....	2
19	261 330	HAUPTDUESE 198 / MAIN JET 198 GETTO MASSIMO 198.....	2

BILD-NR. ILL. NO. FIG.	TEILE-NR. PART NO. CODICE	B E Z E I C H N U N G D E S C R I P T I O N D E S C R I Z I O N E	STUECK QTY. QTA.
19	261 995	HAUPTDUESE 200 / MAIN JET 200 GETTO MASSIMO 200.....	2
19	261 331	HAUPTDUESE 202 / MAIN JET 202 GETTO MASSIMO 202.....	2
19	261 996	HAUPTDUESE 205 / MAIN JET 205 GETTO MASSIMO.....	2
19	261 332	HAUPTDUESE 208 / MAIN JET 208 GETTO MASSIMO 208.....	2
19	261 333	HAUPTDUESE 212 / MAIN JET 212 GETTO MASSIMO 212.....	2
19	261 997	HAUPTDUESE 215 / MAIN JET 215 GETTO MASSIMO 215.....	2
19	261 334	HAUPTDUESE 218 / MAIN JET 218 GETTO MASSIMO 218.....	2
19	261 999	HAUPTDUESE 220 / MAIN JET 220 GETTO MASSIMO 220.....	2
19	261 335	HAUPTDUESE 225 / MAIN JET 225 GETTO MASSIMO 225.....	2
19	261 336	HAUPTDUESE 230 / MAIN JET 230 GETTO MASSIMO 230.....	2
20	261 985	LEERLAUFDUESENEINSATZ 1 IDLER JET INSERT 1 EMULSIONATORE MINIMO 1.....	2
21	261 341	LEERLAUFDUESE 60 / IDLER JET 60 GETTO MINIMO 60..... DIESER TEIL IST SERIENMAESSIG MONTIERT THIS PART IS MOUNTED AS STANDARD QUESTO PEZZO E MONTATO STANDARD	2
21	261 345	LEERLAUFDUESE 52 / IDLER JET 52 GETTO MINIMO 52.....	2
21	261 340	LEERLAUFDUESE 55 / IDLER JET 55 GETTO MINIMO 55.....	2
21	261 344	LEERLAUFDUESE 58 / IDLER JET 58 GETTO MINIMO 58.....	2
21	261 343	LEERLAUFDUESE 62 / IDLER JET 62 GETTO MINIMO 62.....	2
21	261 342	LEERLAUFDUESE 65 / IDLER JET 65 GETTO MINIMO 65.....	2

BILD-NR. ILL. NO. FIG.	TEILE-NR. PART NO. CODICE	B E Z E I C H N U N G D E S C R I P T I O N D E S C R I Z I O N E	STUECK QTY. QTA.
22	261 896	STARTDUESE 75 / STARTING JET 75 GETTO AVVIAMENTO 75.....	2
23	261 887	NADELVENTIL 350 / NEEDLE VALVE 350 VALVOLA A SPILLO 350..... FUER AUSFUEHRUNG R O A D R A C E R UND FUER AUSFUEHRUNG K A R T . FOR CONFIGURATION R O A D R A C E R AND FOR CONFIGURATION K A R T . PER ESECUZIONE R O A D R A C E R E PER ESECUZIONE K A R T .	2
24	 DICHTRING, VERWENDE DICHTUNGSSATZ 293 835 GASKET RING, USE GASKET SET 293 835 GUARNIZIONE, UTILIZZARE BUSTA GUARNIZIONI 293 835	2
25	261 290	SCHWIMMERAUFHAENGUNG / FLOAT BRACKET SUPPORTO GALLEGGIANTE.....	2
26	229 270	STIFT / FLOAT PIN / PERNO GALLEGGIANTE...	2
27	261 230	SCHWIMMER 3 / FLOAT 3 / GALLEGGIANTE 3...	4
28	 DICHTUNG, VERWENDE DICHTUNGSSATZ 293 835 GASKET, USE GASKET SET 293 835 GUARNIZIONE, UTILIZZARE BUSTA GUARNIZIONI 293 835	2
29	261 310	SCHWIMMERGEHAEUSE KPL. FLOAT CHAMBER ASSY., / VASCHETTA CPL.,...	2
30	 DICHTRING, VERWENDE DICHTUNGSSATZ 293 835 GASKET RING, USE GASKET SET 293 835 GUARNIZIONE, UTILIZZARE BUSTA GUARNIZIONI 293 835	2
31	261 370	ABLASSSCHRAUBE / PLUG SCREW TAPPO SPURGO.....	2
32	845 312	HOCHSPANNRING VHZ 5 / LOCK WASHER VHZ 5 RONDELLA ELASTICA VHZ 5.....	6
33	240 978	ZYL.SCHRAUBE M5X22 DIN 34 SLOTTED HEAD SCREW M5X22 VITE TONDA M5X22.....	6

BILD-NR. ILL. NO. FIG.	TEILE-NR. PART NO. CODICE	B E Z E I C H N U N G D E S C R I P T I O N D E S C R I Z I O N E	STUECK QTY. QTA.
34	239 985	DRUCKFEDER / COMPRESSION SPRING / MOLLA..	2
35	261 280	LUFTREGULIERSCHRAUBE / ADJUSTMENT SCREW VITE REG. ARIA.....	2
36	261 955	KRAFTSTOFFSIEB / FUEL FILTER FILTRO BENZINA.....	2
37	 DICHTRING, VERWENDE DICHTUNGSSATZ 293 835 GASKET RING, USE GASKET SET 293 835 GUARNIZIONE, UTILIZZARE BUSTA GUARNIZIONE 293 835	2
38	261 300	VERSCHLUSSSCHRAUBE / PLUG SCREW / TAPPO..	2
39	261 840	CHOKERKOLBEN / STARTING PISTON PISTONCINO CHOKE.....	2
40	239 860	RUECKZUGFEDER / SPRING / MOLLA.....	2
41	 O-RING 8-1, VERWENDE DICHTUNGSSATZ 293 835 O-RING 8-1, USE GASKET SET 293 835 ANELLO OR 8-1, UTILIZZARE BUSTA GUARNIZIONI 293 835	2
42	 WIDERLAGER, KEIN ERSATZTEIL BRACKET, NO SPARE PART APPOGGIO, NON VENDUTO SEPARATAMENTE	2
43	240 505	SENKSCHRAUBE M4,5X10 COUNTERSUNK SCREW M4,5X10 / VITE M4,5X10.	2
44	942 541	SK-MUTTER M6X0,75 HOEHE 3 HEX. NUT M6X0,75 / DADO M6X0,75.....	2
45	261 915	CHOKERHEBEL KPL. / CHOKE LEVER ASSY., LEVA STARTER CPL.,..... OPTION OPTION OPTION	2
46	293 835	DICHTUNGSSATZ / GASKET SET SERIE GUARNIZIONI..... FUEER DEN VERGASER FOR THE CARBURETOR PER IL CARBURATORE	2

BILD-NR. ILL. NO. FIG.	TEILE-NR. PART NO. CODICE	B E Z E I C H N U N G D E S C R I P T I O N D E S C R I Z I O N E	STUECK QTY. QTA.
47	994 485	MIKUNI-PUMPE DF 52-48 MIKUNI-FUEL PUMP DF 52-48 POMPA BENZINA MIKUNI DF 52-48..... NUR FUER AUSFUEHRUNG K A R T FOR CONFIGURATION K A R T ONLY SOLE PER ESECUZIONE K A R T	1
48	850 440	DICHTUNG / GASKET / GUARNIZIONE.....	1
49	861 210	PUMPENMEMBRANE / DIAPHRAGM DIAFRAMMA POMPA.....	2
50	850 445	DICHTUNG / GASKET / GUARNIZIONE.....	1
51	850 447	DICHTUNG / GASKET / GUARNIZIONE.....	1
52	850 450	DICHTUNG / GASKET / GUARNIZIONE.....	1
53	841 035	KOMBISCHRAUBE M4X28 COMBINED SCREW M4X28 / VITE M4X28.....	6



REPARATURWERKZEUGE, DICHTUNGSSATZ
 REPAIR TOOLS, GASKET SET
 ATTREZZI, SERIE GUARNIZIONI

BILD-NR. ILL. NO. FIG.	TEILE-NR. PART NO. CODICE	B E Z E I C H N U N G D E S C R I P T I O N D E S C R I Z I O N E	STUECK QTY. QTA.
1	276 502	MONTAGESTEMPEL KPL. INSERTION JIG ASSY., TAMPONE MONTAGGIO CPL.,..... FUER WD-RING 230 395 / KURBELWELLE, 930 675 / HAUPTWELLE FOR OIL SEAL 230 395 / CRANKSHAFT, 930 675 / MAINSHAFT PER PARAOLIO 230 395 / ALBERO MOTORE, 930 675 / ALBERO SECONDARIO	1
2	276 490	MONTAGESTEMPEL KPL. INSERTION JIG ASSY., TAMPONE MONTAGGIO CPL.,..... FUER WD-RING 930 265, KURBELWELLE MAGNETSEITIG FOR OIL SEAL 930 265, CRANKSHAFT MAGNETO SIDE PER PARAOLIO 930 265, ALBERO MOTORE LATO MAGNETE	1
3	276 250	MONTAGESTEMPEL / INSERTION JIG TAMPONE MONTAGGIO..... FUER WD-RING 230 690, SCHALTWELLE FOR OIL SEAL 230 690, SHIFT SHAFT PER PARAOLIO 230 690, ALBERO CAMBIO	1
4	277 055	MONTAGESTEMPEL / INSERTION JIG TAMPONE MONTAGGIO..... FUER WD-RING 831 740, WASSERPUMPE FOR OIL SEAL 831 740, WATER PUMP PER PARAOLIO 831 740, POMPA ACQUA	1
5	276 260	MONTAGEPLATTE / INSERTION JIG TAMPONE MONTAGGIO..... FUER WD-RING 230 790, KUPPLUNGSKORB FOR OIL SEAL 230 790, CLUTCH PER PARAOLIO 230 790, FRIZIONE	1
6	876 145	ABZIEHER M36X1,5 KPL. PULLER ASSY., M36X1,5 ESTRATTORE M36X1,5 CPL.,..... FUER TANDEM RAD MAGNETSEITIG FOR TANDEM GEAR MAGNETO SIDE PER INGRANAGGIO TANDEM, LATO MAGNETE	1

BILD-NR. ILL. NO. FIG.	TEILE-NR. PART NO. CODICE	B E Z E I C H N U N G D E S C R I P T I O N D E S C R I Z I O N E	STUECK QTY. QTA.
7	276 015	ROTORABZIEHER KPL. / PULLER ASSY., ESTRATTORE PER ROTORE..... FUER ROTOR FOR ROTOR PER ROTORE	1
8	241 770	SK-SCHRAUBE M5X25 DIN 933 HEX. SCREW M5X25 / VITE ESAGONALE M5X25..	2
9	277 170	FUEHRUNGSHUELSE / GUIDE SLEEVE BUSSOLA GUIDA..... FUER VORGELEGEWELLE FOR CLUTCH SHAFT PER ALBERO PRIMARIO	1
10	277 970	FUEHRUNGSHUELSE / GUIDE SLEEVE BUSSOLA GUIDA..... FUER WD-RING 930 675, HAUPTWELLE FOR OIL SEAL 930 675, MAINSHAFT PER PARAOLIO 930 675, ALBERO SECONDARIO	1
11	277 040	FUEHRUNGSHUELSE / GUIDE SLEEVE BUSSOLA GUIDA..... FUER WD-RING 230 690, SCHALTWELLE FOR OIL SEAL 230 690, SHIFT SHAFT PER PARAOLIO 230 690, ALBERO CAMBIO	1
12	276 360	LAGERAUSZIEHER KPL. / PULLER ASSY., ESTRATTORE CPL.,..... FUER RK-LAGER 932 032, VORGELEGEWELLE FOR BALL BEARING 932 032, CLUTCH SHAFT PER CUSCINETTO 932 032, ALBERO PRIMARIO	1
13	276 680	RINGAUSZIEHER KPL. / PULLER ASSY., ESTRATTORE CPL.,..... FUER NADELLAGER 232 080 FOR NEEDLE BEARING 232 080 PER GABBIA A RULLI 232 080	1
14 - 16	276 167	MONTAGEPLATTE KPL. MOUNTING PLATE ASSY., PIASTRA MONTAGGIO CPL.,.....	1
15	276 178	MONTAGEBOLZEN 8/20X20/58 MOUNTING BOLT 8/20X20/58 BULLONE 8/20X20/58..... FUER MOTOR TYPE 128 FOR ENGINE TYPE 128 PER MOTORE TIPO 128	1

BILD-NR. ILL. NO. FIG.	TEILE-NR. PART NO. CODICE	B E Z E I C H N U N G D E S C R I P T I O N D E S C R I Z I O N E	STUECK QTY. QTA.
16	276 179	MONTAGEBOLZEN 10,5/55X20/64 MOUNTING BOLT 10,5/55X20/64 BULLONE 10,5/55X20/64.....	1
		FUER MOTOR TYPE 256 FOR ENGINE TYPE 256 PER MOTORE TIPO 256	
17	241 965	FIXIERSCHRAUBE M8X30 FIXATION SCREW M8X30 VITE BLOCCAGGIO M8X30.....	1
		FUER KURBELWELLE FOR CRANKSHAFT PER ALBERO MOTORE	
18	276 040	KONTERSCHLUESSEL / WRENCH 11 MM CHIAVE FRIZIONE 11 MM.....	1
		ZUM EINSTELLEN DES KUPPLUNGSSPIELES NUR FUER 3-KUGEL-KUPPLUNGS-AUSRUECKSYSTEM FOR CLUTCH PLAY ADJUSTMENT ONLY FOR 3-BALL CLUTCH RELEASE SYSTEM PER REGISTRO GIOCO FRIZIONE SOLO PER CHIOCCIOLA CON 3 SFERE	
19	277 884	MITNEHMERFIXIERUNG KPL. CLUTCH HUB LOCKING TOOL ASSY., ATTREZZO BLOCCAGGIO FRIZIONE CPL.....	1
20	876 973	MONTAGERING / PISTON RING SPANNER 54 MM STRINGIFASCE 54 MM.....	1
		FUER KOLBEN 54 MM FOR PISTON 54 MM PER PISTONE 54 MM	
21	876 950	PRAEZISIONS-MESSUHR / PRECISION GAUGE COMPARATORE.....	1
		FUER KONTROLLE DES ZUENDZEITPUNKTES TO CHECK IGNITION TIMING PER CONTROLLO ANTICIPO ACCENSIONE	
22	876 947	MESSUHRVERLAENGERUNG / GAUGE PIN 52 MM PROLUNGAMENTO COMPARATORE 52 MM.....	1
23	876 940	MESSUHRADAPTER / GAUGE ADAPTER ADATTATORE PER COMPARATORE.....	1
24	841 771	GEWINDESTIFT M6X8 DIN 913 SET SCREW M6X8 / VITE M6X8.....	1
25	277 892	RINGHAELFTE / RING HALF / SEMI-ANELLO....	2
		FUER RK-LAGER, KURBELWELLE FOR BALL BEARING, CRANKSHAFT PER CUSCINETTO, ALBERO MOTORE	

BILD-NR. ILL. NO. FIG.	TEILE-NR. PART NO. CODICE	B E Z E I C H N U N G D E S C R I P T I O N D E S C R I Z I O N E	STUECK QTY. QTA.
26	977 490	RING / RING / ANELLO..... FUER RINGHAELFTE 277 892 FOR RING HALF 277 892 PER SEMI-ANELLO 277 892	1
27	276 039	RINGHAELFTE / RING HALF / SEMI-ANELLO.... FUER TANDEM RAD ABTRIEBSEITIG FOR TANDEM GEAR P.T.O. SIDE PER INGRANAGGIO TANDEM, ALBERO MOTORE POSTERIORE	2
28	977 480	RING / RING / ANELLO..... FUER RINGHAELFTE 276 039 FOR RING HALVE 276 039 PER SEMI-ANELLO 276 039	1
29	277 130	SCHUTZPILZ / PROTECTION CAP CAPPUCCIO PROTEZIONE..... FUER KURBELWELLE MAGNETSEITIG FOR CRANKSHAFT MAGNETO SIDE PER ALBERO MOTORE LATO MAGNETE	1
30	876 557	SCHUTZPILZ / PROTECTION MUSHROOM CAPPUCCIO PROTEZIONE..... FUER KURBELWELLE FOR CRANKSHAFT PER ALBERO MOTORE	1
31 - 32	876 298	ABZIEHER KPL. / PULLER ASSY., ESTRATTORE CPL.,.....	1
32	940 755	SK-SCHRAUBE M16X1,5X150 DIN961 HEX. SCREW M16X1,5X150 VITE ESAGONALE M16X1,5X150.....	1
33	840 681	ZYL.SCHRAUBE M8X40 DIN 912 ALLEN SCREW M8X40 / BRUGOLA M8X40.....	4
34	899 785	SCHRAUBENSICHERUNG NIEDRIGFEST LOCTITE 221 VIOLET 10 CC., LOCTITE 221 VIOLETTO, 10 CC.,..... 10 CCM. LOW STRENGTH BOND PASTA FISSAGGIO VITI, DEBOLE	1
35	899 788	LOCTITE 648 GRUEN LOCTITE 648 GREEN, 5 GR., LOCTITE 648 VERDE, 5 GR.,..... SCHRAUBENSICHERUNG HOCHFEST, 6 CCM. HIGH STRENGTH BOND PASTA FISSAGGIO VITI, FORTE	1

BILD-NR. ILL. NO. FIG.	TEILE-NR. PART NO. CODICE	B E Z E I C H N U N G D E S C R I P T I O N D E S C R I Z I O N E	STUECK QTY. QTA.
36	899 784	LOCTITE 574 ORANGE LOCTITE 574 ORANGE 50 CC., LOCTITE 574 ARANCIO 50 CC.,..... FLAECHENDICHTMITTEL, 50 CCM. SEALING COMPOUND PASTA GUARNIZIONE	1
37	297 431	LOCTITE ANTI-SEIZE 76710 LOCTITE ANTI-SEIZE 10 GR., LOCTITE ANTI-SEIZE 10 GR.,..... ZUR VERHINDERUNG VON PASSUNGSROST, 10 GR. TO PREVENT METAL GALLING PER EVITARE CORROSIONE	1
38	897 161	MOLYKOTE 111 / MOLYKOTE 111, 100 GR., MOLYKOTE 111, 100 GR.,..... SILIKONFETT, 100 GR. SILICONE GREASE GRASSO SILICONE	1
39	897 330	LITHIUMSEIFENFETT LITHIUM-BASE GREASE, 250 GR., GRASSO LITHIUM, 250 GR.,..... 250 GR., ZUR VERHINDERUNG VON KRIECHSTROEMEN TO PREVENT LEAKAGE CURRENT PER EVITARE CURRENT DI DISPERSIONE	1
40	297 386	SILASTIC 732 RTV SILASTIC 732 RTV, 100 GR., SILASTIC 732 RTV, 100 GR.,..... 100 GR.	1
41	297 710	PU-KLEBER PU-GLUE, SIKAFLEX-255, 310 ML., COLLA PU, SIKAFLEX-255, 310 ML.,..... SIKAFLEX-255, ZUR SCHWINGUNGSDAEMPfung, 310 ML. FOR VIBRATION ABSORPTION PER SMORZARE VIBRAZIONI	1
42	292 517	DICHTUNGSSATZ / GASKET SET SERIE GUARNIZIONI..... FUER DEN MOTOR FOR THE ENGINE PER IL MOTORE	1

ROTAX - BEKLEIDUNG
 ROTAX - WEAR
 ABITO - ROTAX

OHNE ABBILDUNG
 WITHOUT ILLUSTRATION
 SENZA ILLUSTRARZIONE

BILO-NR. ILL. NO. FIG.	TEILE-NR. PART NO. CODICE	B E Z E I C H N U N G D E S C R I P T I O N D E S C R I Z I O N E	STUECK QTY. QTA.
1	N 580 231	ROTAX-RACING-TEAM T-SHIRT 48 ROTAX-RACING-TEAM T-SHIRT 48 CORPETTO ROTAX-RACING-TEAM 48.....	N BED AS REQ A RICH
1	N 580 232	ROTAX-RACING-TEAM T-SHIRT 50 ROTAX-RACING-TEAM T-SHIRT 50 CORPETTO ROTAX-RACING-TEAM 50.....	N BED AS REQ A RICH
1	N 580 233	ROTAX-RACING-TEAM T-SHIRT 52 ROTAX-RACING-TEAM T-SHIRT 52 CORPETTO ROTAX-RACING-TEAM 52.....	N BED AS REQ A RICH
1	N 580 234	ROTAX-RACING-TEAM T-SHIRT 54 ROTAX-RACING-TEAM T-SHIRT 54 CORPETTO ROTAX-RACING-TEAM 54.....	N BED AS REQ A RICH
2	N 580 241	ROTAX-RACING-TEAM SWEATER 48 ROTAX-RACING-TEAM SWEATER 48 MAGLIONE ROTAX-RACING-TEAM 48.....	N BED AS REQ A RICH
2	N 580 242	ROTAX-RACING-TEAM SWEATER 50 ROTAX-RACING-TEAM SWEATER 50 MAGLIONE ROTAX-RACING TEAM 50.....	N BED AS REQ A RICH
2	N 580 243	ROTAX-RACING-TEAM SWEATER 52 ROTAX-RACING-TEAM SWEATER 52 MAGLIONE ROTAX-RACING-TEAM 52.....	N BED AS REQ A RICH
2	N 580 244	ROTAX-RACING-TEAM SWEATER 54 ROTAX-RACING-TEAM SWEATER 54 MAGLIONE ROTAX-RACING-TEAM 54.....	N BED AS REQ A RICH
3	N 580 251	ROTAX-RACING-TEAM POLO-HEMD 48 ROTAX-RACING-TEAM POLO-SHIRT 48 CORP. DA POLO ROTAX-RACING-T. 48.....	N BED AS REQ A RICH
3	N 580 252	ROTAX-RACING-TEAM POLO-HEMD 50 ROTAX-RACING-TEAM POLO-SHIRT 50 CORP. DA POLO ROTAX-RACING-T. 50.....	N BED AS REQ A RICH
3	N 580 253	ROTAX-RACING-TEAM POLO-HEMD 52 ROTAX-RACING-TEAM POLO-SHIRT 52 CORP. DA POLO ROTAX-RACING-T. 52.....	N BED AS REQ A RICH

BILD-NR. ILL. NO. FIG.	TEILE-NR. PART NO. CODICE	B E Z E I C H N U N G D E S C R I P T I O N D E S C R I Z I O N E	STUECK QTY. QTA.
3	N 580 254	ROTAX-RACING-TEAM POLO-HEMD 54 ROTAX-RACING-TEAM POLO-SHIRT 54 CORP. DA POLO ROTAX-RACING-T. 54.....	N BED AS REQ A RICH
4	N 580 260	ROTAX-RACING-TEAM HR.-SHORT 46 ROTAX-RACING-TEAM SHORTS 46 CALZONCINI ROTAX-RACING-TEAM 46.....	N BED AS REQ A RICH
4	N 580 261	ROTAX-RACING-TEAM HR.-SHORT 48 ROTAX-RACING-TEAM SHORTS 48 CALZONCINI ROTAX-RACING-TEAM 48.....	N BED AS REQ A RICH
4	N 580 262	ROTAX-RACING-TEAM HR.-SHORT 50 ROTAX-RACING-TEAM SHORTS 50 CALZONCINI ROTAX-RACING-TEAM 50.....	N BED AS REQ A RICH
4	N 580 263	ROTAX-RACING-TEAM HR.-SHORT 52 ROTAX-RACING-TEAM SHORTS 52 CALZONCINI ROTAX-RACING-TEAM 52.....	N BED AS REQ A RICH
5	N 580 271	ROTAX-RACING-T. JOGGERHOSE 48 ROTAX-RACING-TEAM TROUSERS 48 CALZONI ROTAX-RACING-TEAM 48.....	N BED AS REQ A RICH
5	N 580 272	ROTAX-RACING-T. JOGGERHOSE 50 ROTAX-RACING-TEAM TROUSERS 50 CALZONI ROTAX-RACING-TEAM 50.....	N BED AS REQ A RICH
5	N 580 273	ROTAX-RACING-T. JOGGERHOSE 52 ROTAX-RACING-TEAM TROUSERS 52 CALZONI ROTAX-RACING-TEAM 52.....	N BED AS REQ A RICH
5	N 580 274	ROTAX-RACING-T. JOGGERHOSE 54 ROTAX-RACING-TEAM TROUSERS 54 CALZONI ROTAX-RACING-TEAM 54.....	N BED AS REQ A RICH